

# Quick Installation Guide

please take the time to read this Quick Installation Guide. The guide contains important information and notes regarding the installation and operation.

## NO UV, NO IR, NO EYES RISK !

### IMPORTANT!

- \*Always switch off the power supply before commencing work!
- \*This LED tube itself has IP20 rating, therefore it is only for indoor usage and not suitable for outdoor lighting or emergency lighting.
- \*This LED tube must be installed by a professional electrician in accordance with the relevant electrical codes.
- \*Do not change the structure or any components of the tube to ensure safety.

- \*Please keep this Quick Installation Guide for at least the coming ten years for future system maintenance.
- \*This LED tube is designed to fit in standard IEC compliant G13 bi-pin lampholders.
- \*Please buy the LED starter extra if replace the EM ballast based system
- \*Please read the installation instruction very carefully and follow the wiring instructions to ensure safety.
- \*This LED tube is not suitable for dimmable.



Model	Power W	Maximum Current A	Length mm (inches)	Ø mm (inches)	Weight kg (lbs)
ZGSM-T8-600	12	0.15	603 (23.7)	26 (1.0)	0.22 (0.5)
ZGSM-T8-1200	15 / 18 / 22	0.19 / 0.22 / 0.27	1214 (47.8)	26 (1.0)	0.38 (0.8)
ZGSM-T8-1500	24	0.30	1514 (59.6)	26 (1.0)	0.49 (1.1)

Check whether it concerns an EM(Electro Magnetic)Ballast based or HF(High Frequency Electronic) ballastbased system.

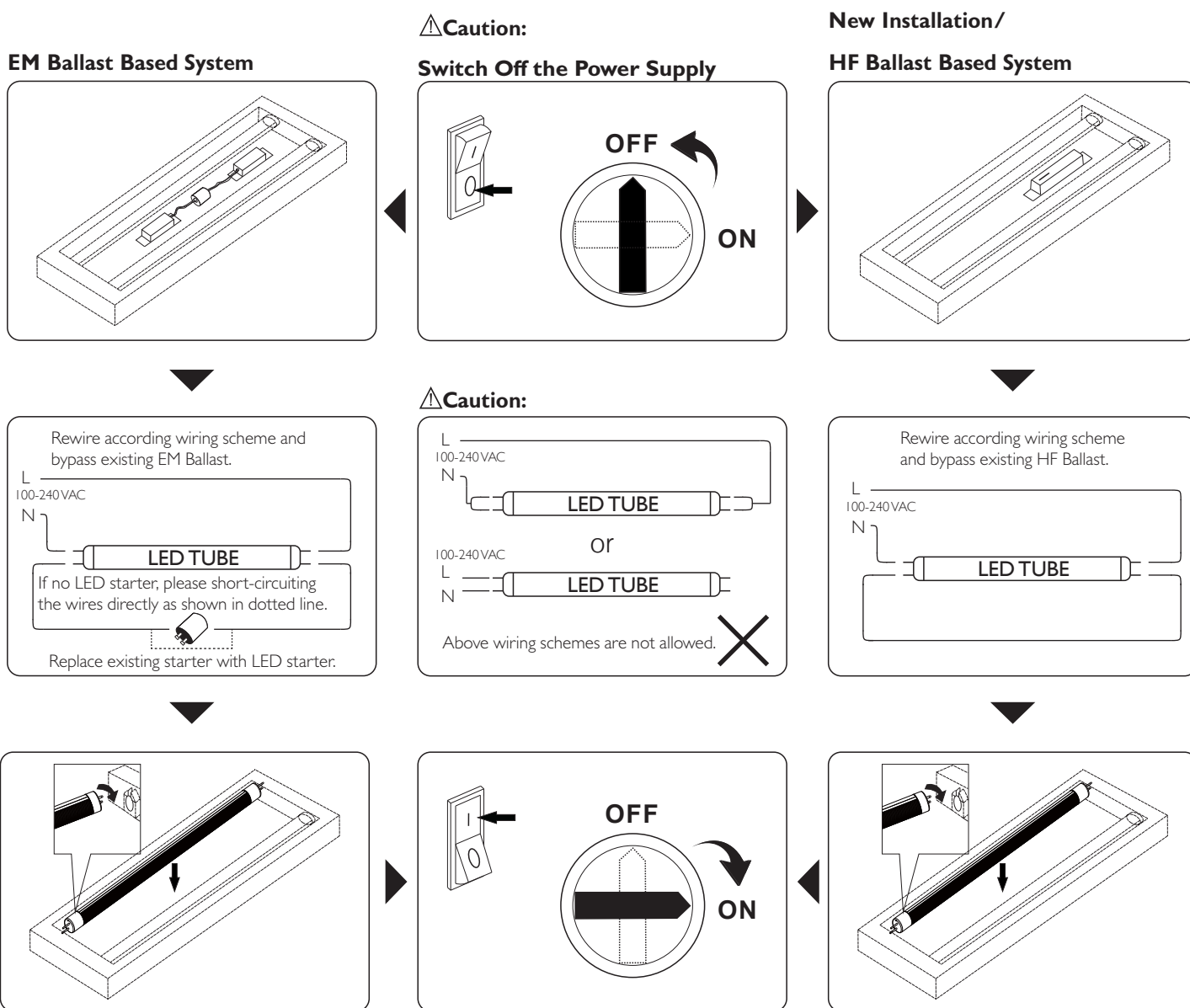
\* AC work under 100-240V AC.

\*Bi-pin Distance(12.7 mm)



T8 Series

Check whether it concerns an EM(Electro Magnetic) Ballast based or HF(High Frequency Electronic) ballast based system.



**⚠ Caution:**

- Turn Power Off During Installation. Do Not Connect or Disconnect Under Load.
- Caution Risk of Fire.

**Packing List**

- LED Tube :1 pc
- Quick Installation Guide :1 pc
- \*LED Starter :Available for Sell if Required

The product (LED lighting equipment, electrical , electronic equipment) should not be placed in municipal waste. Check local regulations for disposal of electronic products.

- Features and specifications are subject to change without notice.
- The product color may be different with actual due to discrepancy of camera or screen settings.