

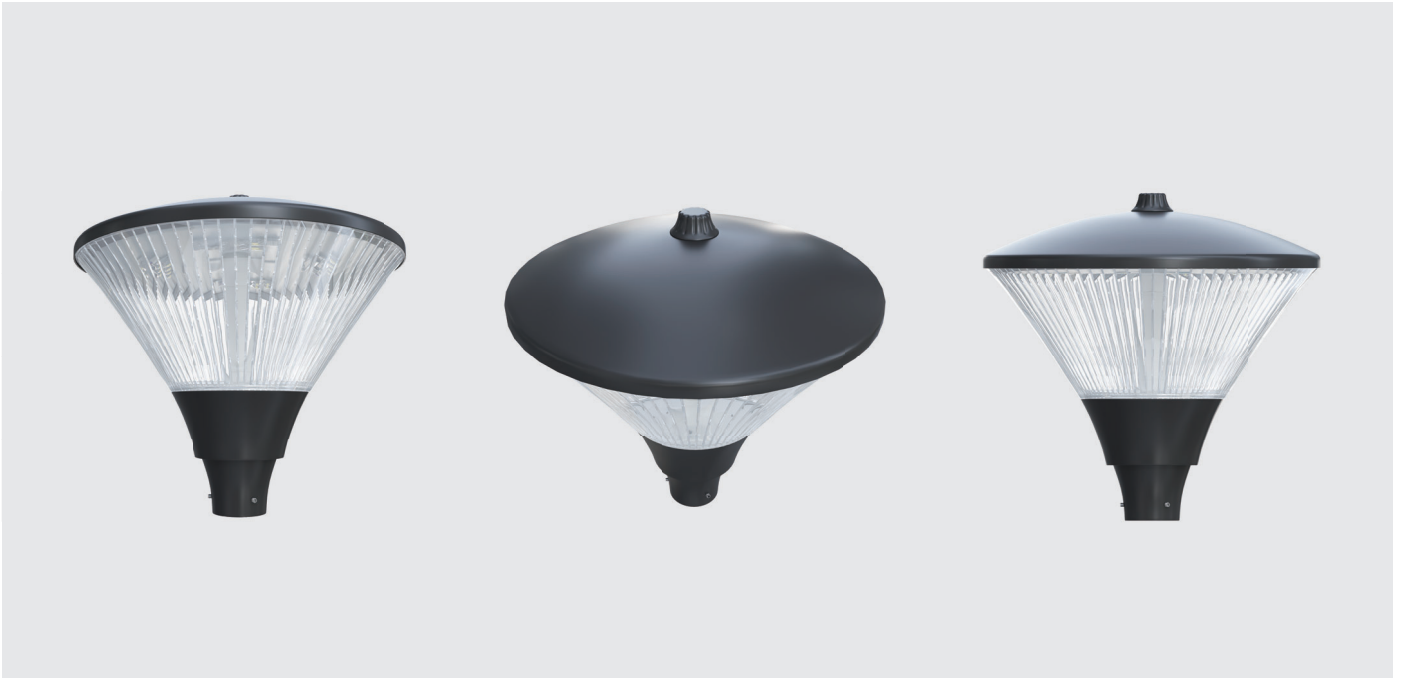
# ZG-6116

## Post Top Luminaires

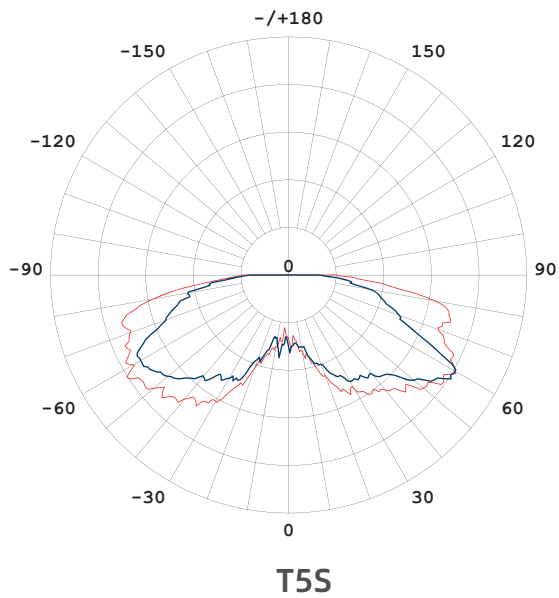
---



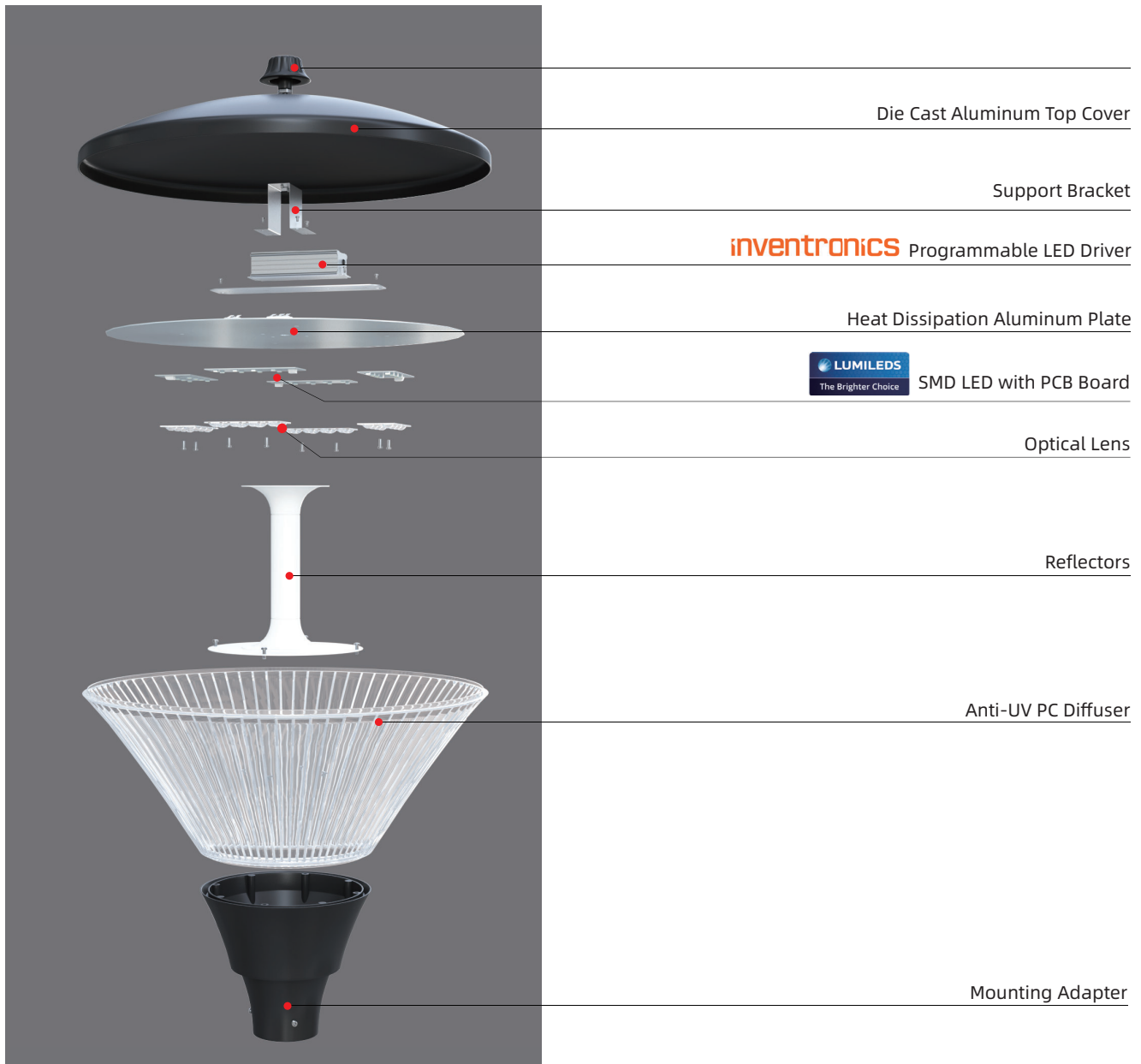
## Product Overview



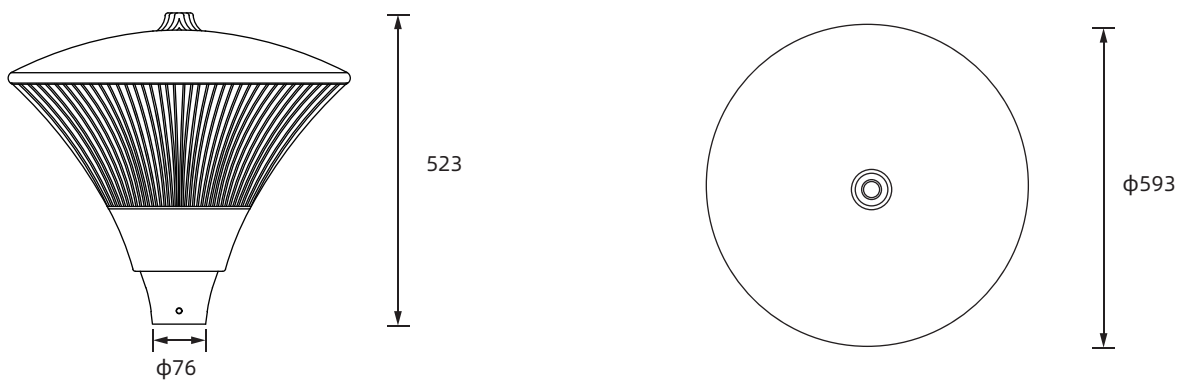
## Light Distributions



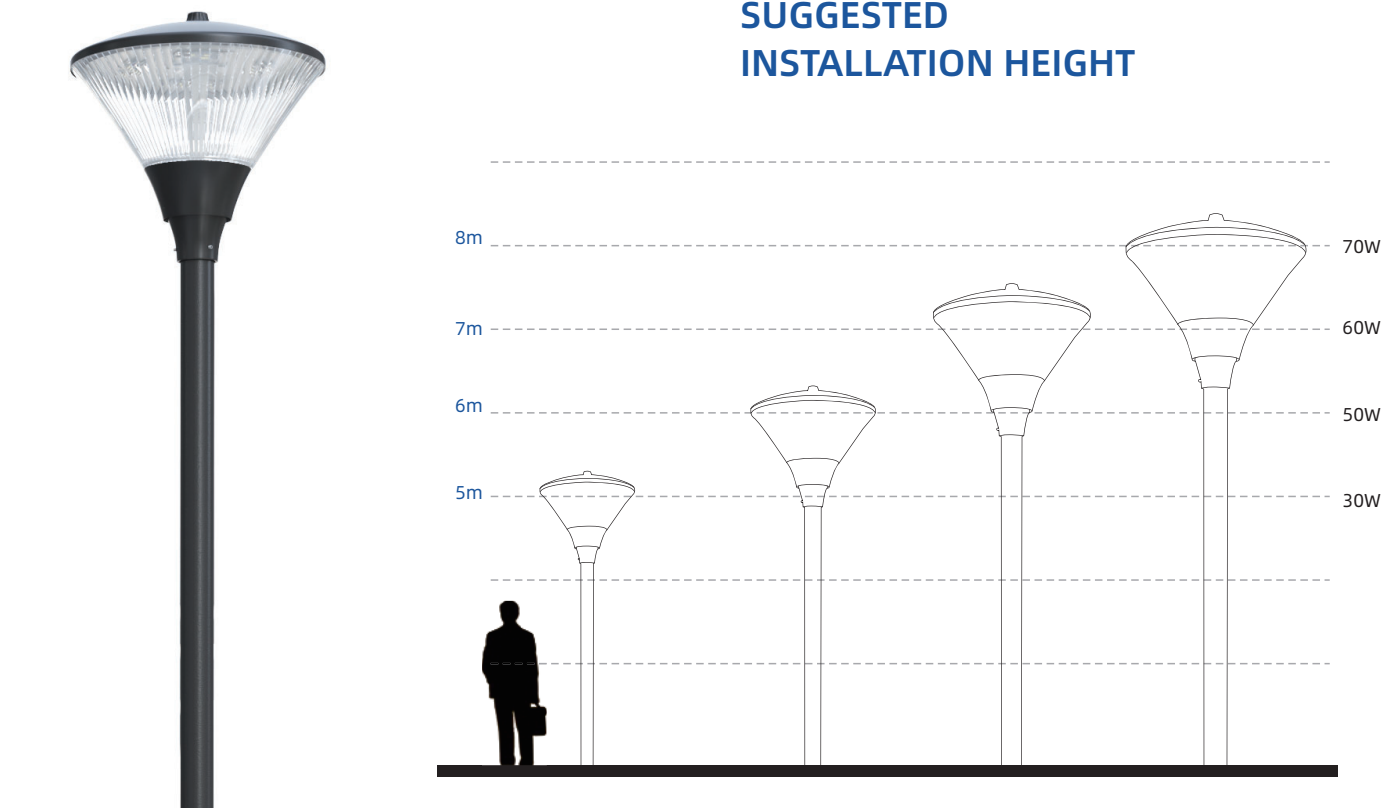
Product Overview



Dimension(mm)



## SUGGESTED INSTALLATION HEIGHT



## CHARACTERS

Power	30W	50W	60W	70W
Protection Class	CLASS I/II/III			
IP/IK Rating	IP66, IK08			
Color Temperature	2200K-6500K	2200K-6500K	2200K-6500K	2200K-6500K
Efficiency	120 LM/W	120 LM/W	120 LM/W	120 LM/W
CRI	70/80	70/80	70/80	70/80
Input Voltage	AC 100-240/277V/347V/480V, 50/60Hz or DC12/24V			
Driver Suggest	INVENTRONICS or other brands			
Dimming	1-10V Dimming (Default) /Timer Dimming			
Surge Recommendation	10KV (Default) / 20KV (available on request)			
LED Type	LUMILEDS SMD 5050 or other brands			
LED Quantities	16	24	32	32
LED Current	75mA	84mA	77mA	77mA
Mounting	On pole with 76 mm top diameter, , adaptor 60 mm top diameter can be chosen			
Material	Die casting with standard ADC12 type aluminum, stainless 314 clips and screws. Clear polycarbonate with uv-resistant acrylic.			
Painting Color Suggest	RAL9005 Jet Black /Other Colors on request			
Available on request	NEMA socket (3/5/7pins), ZHAGA socket, Short cap, Photocell, NTC, OLC, DALI Dimming			
Weight	Net weight: 7kgs   Gross weight: 8kgs			
Packing Size	540x540x540mm			